

Pay Dirt

HORTICULTURE
March 2024



Cooperative Extension Service

Madison County
230 Duncannon Lane
Richmond, KY 40475
(859) 623-4072
Fax: (859) 624-9510
<http://extension.ca.uky.edu>

Hello Horticulturalists!

I can't believe the warm weather we have had recently. While it might inspire spring fever, don't do anything rash! We could still have cold weather. I hate being the voice of reason...

Having trouble with your lawn?

Low Maintenance Lawn Care

March 21st at 6:30 to 8:00 pm
Madison County Extension Office

For more information, check out page 4 of this newsletter.

Sincerely,
Amanda Sears

County Extension Agent for Horticulture

amanda.sears@uky.edu

Visit <https://madison.ca.uky.edu/> and click on "Program Areas" and then "Horticulture"

What's that plant with purple flowers?

It is probably either purple deadnettle (*Lamium purpureum*) or henbit (*Lamium amplexicaule*). They look very similar. Both belong to the mint family and have square stems with small purple flowers.

There are a few differences. Deadnettles's upper leaves have a purple tinge and pointed tips.

Henbit has very pubescent (hairy) leaves.

Both weeds are winter annuals meaning they grow, flower and then fade away as warm weather sets in. So if these plant is bothering you, give it time, they will go away soon.



Notice the purplish leaves on the dead nettle plant. Henbit leaves are uniformly green.



Let's Cook With Herbs! April 18, 10am-12 noon

Ever wonder which is the best herb to use or when to add it to a dish? Are there herbs you don't regularly use you'd like to taste? Do you want to know which herbs to buy fresh? Are you interested in growing your own herbs? Would you like some recipes for herbs you already have or are already growing?

Victoria Faoro's presentation will cover everything from shopping for herbs to growing and preserving them to using them in a range of dishes. And you will have a chance to sample some of the results. Full recipes will be provided along with many helpful tips for making the most of herbs. Space is limited, **call for reservation: 859-623-4072.**

Cooperative Extension Service

Agriculture and Natural Resources
Family and Consumer Sciences
4-H Youth Development
Community and Economic Development

MARTIN-GATTON COLLEGE OF AGRICULTURE, FOOD AND ENVIRONMENT

Educational programs of Kentucky Cooperative Extension serve all people regardless of economic or social status and will not discriminate on the basis of race, color, ethnic origin, national origin, creed, religion, political belief, sex, sexual orientation, gender identity, gender expression, pregnancy, marital status, genetic information, age, veteran status, physical or mental disability or reprisal or retaliation for prior civil rights activity. Reasonable accommodation of disability may be available with prior notice. Program information may be made available in languages other than English. University of Kentucky, Kentucky State University, U.S. Department of Agriculture, and Kentucky Counties, Cooperating. Lexington, KY 40506



Disabilities accommodated with prior notification.

Farmers' Market Update

Madison County Farmers' Market

The market will have a meeting on Thursday, April 11th, at 5:00 pm, at the Madison County Extension Office. To see updates on what the market is doing, check their Facebook page. <https://www.facebook.com/MadisonKYFarmersMarket>

Berea Farmers' Market

The Berea Farmer's Market is at its winter location at 207 N Broadway in Old Town Berea, next to the skating rink. Winter hours are 10 am to 1 pm. Check their Facebook page for updates.

<https://www.facebook.com/bereafarmersmarket>

Commercial Growers

Produce Best Practices Training

Training is via ZOOM and on Tuesday March 26th at 12 noon or Tuesday April 16th at 3:00 pm. You need only attend one session. If you have questions or would like to register for one of the sessions, email Amanda Sears at amanda.sears@uky.edu.

Scale Certification

Thursday April 11th at 4:00 to 6:30 pm at the Madison County Cooperative Extension Office

Representatives from the Kentucky Department of Agriculture (KDA) will be at the Madison County Cooperative Extension Office testing and certifying scales for anyone who sells at the Farmer's Markets.

If you plan on bringing a scale to be certified, please call 859-623-4072, and let us know.



Homebased Microprocessing Workshop



Wednesday, April 10, 2024

9:30am - 2:30pm

Madison County Cooperative Extension Svc.
230 Duncannon Lane, Richmond, KY 40475



For more information & to register:

[ukfcs.net/HBM](https://uky.net/HBM)

https://uky.az1.qualtrics.com/jfe/form/SV_9Y05F1BUNLHUFF

Or Call 859-257-1812

Join our workshop!
Homebased microprocessors are farmers who grow and harvest produce to use in their value-added products. Homebased microprocessors are required to grow a predominant ingredient in the products they make. The first step to becoming certified as a homebased microprocessor is to attend a Homebased Microprocessor (HBM) workshop presented by the University of Kentucky.

The cost of the workshop is \$50.00.

TECH TUESDAY

A SERIES FOR
KY GREENHOUSE GROWERS



Improving Your Integrated Pest Management Program

with
Jarene Brown
of Koppert Biological Systems

Tuesday, March 26th
12 PM EST / 11 AM CT



Register at
bit.ly/kheteshtuesday



Home Fruit Disease Management

Home gardeners will soon be busy with the rush of spring planting activities. Early spring is also when primary infections occur in many fruits crops. That makes late winter is the ideal time for home fruit growers to get a jump on disease management.

You should trim fruit trees to thin the tree canopy. This allows for good air movement and sunlight penetration. Rake up and destroy fallen leaves and remove and destroy fruit mummies left on trees or on the ground from last season. Remove galls on nearby cedar trees which are a source of apple rust diseases. Prune out fire blight cankers in existing apple trees and black knot swellings from plum trees while it is still cold. (it may be too late as we have gotten warm so early)



Prune grapevines to allow good sunlight penetration and air movement for maximum fruit production. Remove any diseased, dead or cankered vines and remove and destroy last year's fruit mummies (old dry fruit) hanging on the vines and lying on the ground.

Berry growers should prune out dead and winter-injured blackberry and raspberry canes and diseased blueberry twigs and branches. Now is a good time to mulch strawberry beds between rows and under the canopy to keep fruits off the ground.

Strawberry plants need adequate spacing to help reduce gray mold fruit rot. Hand removal of dead leaves and stems also reduces the presence of gray mold fungus.

If you use pesticides and fungicides, be sure to read and understand product labels for proper application procedures. Appropriate timing is important for bud and blossom development and to protect pollinators.

When ordering nursery stock for new fruit plantings, choose to plant disease resistant varieties.

Spray guides are available through the extension service. These guides offer cultural methods for disease control as well organic and conventional chemical options. Links to Disease and Pest Management Publications can be found here: <https://plantpathology.ca.uky.edu/extension/publications#FruitsNuts>.

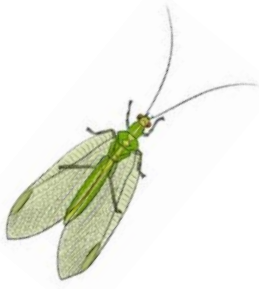
Wintercreeper

Wintercreeper is an evergreen vine that forms a dense ground cover. It is an escaped ornamental, meaning it is a landscape plant that grows aggressively and can take over an area. If not removed, this plant can out compete native plants.

If you have a light infestation of this weed, try to pull each plant up by the roots. For heavy infestations, vines should be cut by hand and each stem sprayed with Glyphosate or Triclopyr in late winter when most native vegetation is dormant and before the emergence of spring wildflowers. For precision, you can use a paint brush to apply the herbicide to the cut stems.

Unfortunately, wintercreeper is not the only invasive plant in our area. Bush honeysuckle, Chinese privet, tree of heaven and many more infest our state. For more information on invasive plant species, check out the UK Forestry Department: https://forestry.ca.uky.edu/invasive_plants





The More You Know; the Better You Grow!

All Classes are held at the Madison County Extension Office,
230 Duncannon Lane, Richmond.

Seating is limited so call 859-623-4072 to register soon!

Low Maintenance Lawn Care

Powell County Agriculture Agent Jason Vaughn will discuss how to choose the best type of grass for your area, proper mowing and how to avoid stressing your lawn using minimal resources.

Each attendee will receive a rain gauge.

Thursday March 21st at 6:30 to 8:00 pm.

Raise the Roof! Gardening with Raised Beds

Having problems gardening? Soil full of clay? Consider raised bed gardening! Raised beds have tons of benefits including less weeds, better drainage and the soil warms up earlier in the spring, which means you can plant some types of seeds sooner than with an inground garden.

This class will focus on the materials needed to build a raised bed and tips on how to grow a great garden using one!

A raised bed garden kit will be given to a lucky person during class!

Wednesday April 3rd at 10 to 11:30 am.

Landscape Basics

What should I plant there? Is mulch the same as compost? What's the deal with native plants? If you have ever asked yourself these kinds of questions, then this class will help! It will cover the basics of landscaping such plant selection, basic maintenance and other ways to simplify your landscaping and make it great!

Participants will receive a trowel (hand shovel) to use at home!

Tuesday April 16th at 6:30 to 8:00 pm

Name that Pest!

This class will look at common insects and disease problems and how to prevent them. The focus will be on pests in the vegetable garden, landscape and lawn.

All attendees will receive a magnifying glass and taught how to use it when identifying problems.

Monday May 6th at 10 to 11:30 am



FARM FOOD - GROWN OR SOLD IN MADISON COUNTY

Updated February 16, 2024

<https://madison.ca.uky.edu/horticulture>

The links in this document are not active. Please go to: <https://madison.ca.uky.edu/horticulture> To access this document online, and see the links active. Scroll down to "Finding Local Foods" and click there.

FARMERS MARKETS

Check out each farmers market's website and/or Facebook page for more up-to-date information and events, including winter market hours and locations.

Ask individual farmers at the markets about larger quantities of produce for canning or freezing.

- **Madison County Farmers Market:** www.facebook.com/MadisonKYFarmersMarket or <https://madcountymarket.wixsite.com/market>
- **Berea Farmers Market:** <http://www.bereafarmersmarket.org/> or www.facebook.com/bereafarmersmarket

COMMUNITY SUPPORTED AGRICULTURE PROGRAMS

A CSA is a subscription service for which you pay the farmer up front for weekly deliveries of seasonal produce from their farm. All of these CSAs have pick-up/drop-off locations or home delivery in Madison County. Call or check websites for details.

- **Lazy Eight Stock Farm-** Paint Lick- USDA certified organic farm- www.lazyeightstockfarm.com - Bryce Baumann 859-661-1501
- **Sustainable Harvest Farm-** London, KY www.sustainableharvestfarm.com -certified organic- Farm shares are 100% customizable- Ford Waterstrat- 859-227- 5101- ford.waterstrat@gmail.com
- **Wolf Gap Gardens-** 20 week CSA providing certified organic veggies, herbs and flowers - Offer family share or small share - For more information- call 859-582-3105, contact by email wolfgapgardens@gmail.com, or through Facebook- www.facebook.com/wolfgapgardens. More details at directory.oak-ky.org/farm/wolf-gap-gardens/

SEEDS, TRANSPLANTS, and PLANTS

- **Bill Best-** Berea- heirloom bean and tomato seeds- www.heirlooms.org -also sells transplants at the Berea Farmers Market
- **Lucky Clover Farm/Blue Ribbon Tomatoes-**Richmond –tomato seeds and transplants- www.facebook.com/LuckyCloverFarm or luckycloverfarm@gmail.com
- **Berea Farmers Market-**transplants- see farmers market information
- **Madison County Farmers Market-** transplants- see farmers market information
- **Warren Farm Greenhouse-** vegetable transplants- www.facebook.com/WarrenFarmGreenhouse - 859-328-7005
- **Garver Farms-** Paint Lick- www.facebook.com/GarverFarms -Shane Garver- 859-200-8079- plants for sale: blueberries, blackberries, raspberries, currants, and gooseberries
- **Berea College Greenhouse and Gardens-** vegetable, flower, and herb transplants- also have fruit plants for sale: blueberry, blackberry, raspberry, and strawberry- sales on Saturdays, March-May- contact manager, Ema-Leigh Forbes- forbese2@berea.edu .
- **Spurlock Greenhouses-** vegetable transplants and flowers- www.facebook.com/Spurlockgreenhouses - 2785 Red House Road, Richmond, KY- open from about the third week of April through May and June- check Facebook page for updates.

- **Lazy Eight Stock Farm**-Paint Lick- USDA certified organic- vegetable transplants- order 10 weeks in advance, minimum of 72 plants- order through website www.lazyeightstockfarm.com/plants/
- **Duncan's Greenhouse**- spring and summer vegetable transplants- 859-200-9703
www.facebook.com/Duncansgreenhouse

FRUITS – also check the **U-PICK** listings

- **Hérons Landing Apple Orchard**-Apples available September through January- 32 Herons Landing, Richmond- Ken Perry- 859-582-7883

MEATS AND POULTRY/EGGS

NOTE TO BUYERS: Most meat purchases need to be pre-ordered, so plan several months ahead and contact your producer early to get locked in on a processing and/or pick up date.

All meats, poultry, and eggs are available for pick-up, drop-off, or delivery in Madison County. You can also sometimes purchase these items at the farmers markets.

BEEF

- **Harris Farms Beef**- Richmond- sold by ¼, ½, or whole beef, or packaged cuts- Call 859-358-0314 for more information, or to place an order.
- **Windhover Farm**- Garrard County- Larry Swartz and Genia McKee- 859-339-4735- can take orders for lamb, goat, and beef.
- **Darrell Tate**- Madison County-859-893-8283- Preorder a whole, half, or quarter beef- can be cut to order- grain-finished
- **Spencer Farms**- Richmond- Curtis Spencer- 859-248-7520- born and raised on the farm- grain-fed, steroid and hormone free- sold by ¼, ½, or whole beef.
- **Two Creeks Farms**- Berea- Scott Gabbard- 859-661-3696, Angus, grain fed, antibiotic and hormone free sold by ¼, ½ or whole beef.
- **Berea College Farm**- beef available through the Berea College Farm Store-331 North Main Street, Berea- 859-985-3685- www.bereacollegefarmstore.com
- **K&R Farm** - Richmond - 606-260-5502. Pasture-raised beef. Sold by the whole, half, quarter, and USDA-inspected individually packaged cuts. Beef butchered monthly. www.kr-farms.com. Family-owned and operated by Kyle & Roxanne Wooton. Check website for storefront hours.
- **Simpson Livestock**- Andrew Simpson 859-358-5733, Poosey Ridge, www.SimpsonLivestockRKY.com - andrew.simpson6317@gmail.com- We sell beef by the individual cut or wholes, halves, quarters, even eighths. Grass fed, grain finished. Check the website.
- **Reid Farms** – Richmond – 859-200-9188 (call or text). Grain-fed beef by the ½, whole, or individual retail cuts
- **Austin Hunt**- 859-353-7319. Hormone free, grass fed and grain finished beef.

PORK

- **Berea College Farm**- available through the Berea College Farm Store- 331 North Main Street, Berea- 859-985-3685- www.bereacollegefarmstore.com

The links in this document are not active. Please go to: <https://madison.ca.uky.edu/horticulture> To access this document online, and see the links active. Scroll down to "Finding Local Foods" and click there.

- **K&R Farm** - Richmond - 606-260-5502. Pasture-raised pork. Sold by the whole, half, and USDA-inspected individually packaged cuts. Hogs butchered monthly. www.kr-farms.com Family-owned and operated by Kyle & Roxane Wooton. Check website for storefront hours.
- **Simpson Livestock**- Andrew Simpson 859-358-5733, Poosey Ridge, www.SimpsonLivestockRKY.com - andrew.simpson6317@gmail.com- Offers fresh pork products. Check the website.
- **Austin Hunt**- 859-353-7319.

OTHER MEATS

- **Windhover Farm**- Garrard County - Larry Swartz and Genia McKee- 859-339-4735- can take orders for lamb, goat, and beef.
- **K&R Farm** - Richmond - 606-260-5502. Pasture-raised lamb. Sold by the whole and USDA-inspected individually packaged cuts. Pre-order a whole lamb. www.kr-farms.com. Family-owned and operated by Kyle & Roxane Wooton. Check website for storefront hours.

POULTRY or EGGS

- **Berea College Farm**- chicken, eggs, and turkey- can be ordered or purchased through the Berea College Farm Store- 859-985- 3685- 331 North Main Street, Berea- www.bereacollegefarmstore.com

U-PICK

Please check contact information to make sure the crop is available for picking before going to the farm

- **Garver Farms**- Paint Lick- Blueberries, thornless blackberries, gooseberries, elderberries, currents, and black raspberries- Shane Garver- 859-200-8079- www.facebook.com/GarverFarms
- **Baldwin Farms**- Richmond- Pumpkins- check the website for hours, location, and contact information- www.baldwinfarmsky.com
- **Marcum Farms**- Waco- strawberries- Tammy Marcum- 859-369-7300- Also sell already-picked fruit at the farm- www.facebook.com/MarcumFarms

RESTAURANTS USING LOCAL FOODS

- **Boone Tavern**- 100 Main St, Berea- www.boonetavernhotel.com 859-985-3700
- **Native Bagel**-436 Chestnut St., Berea- www.nativebagelcompany.com 859-756-6185- breakfast and lunch
- **Night Jar**- 436 Chestnut St., Berea- www.nightjarberea.com 859-756-6185- dinner
- **Berea College Farm Store cafe**-311 North Main Street, Berea- www.bereacollegefarmstore.com - 859-985-3685. Offers daily lunch menu. Also offers catering.

We hope to keep this list growing, so if you know of anyone else that needs to be added, please let us know (amanda.sears@uky.edu). The requirement for being included on the list is that the food must be grown or raised by a farmer in Madison County. If not raised in Madison County, then the product must be sold in or brought to Madison County by the farmer who produced it.

The links in this document are not active. Please go to: <https://madison.ca.uky.edu/horticulture> To access this document online, and see the links active. Scroll down to "Finding Local Foods" and click there.

April 13th - 9:00 am to 3:00 pm
Madison Co Extension Office
230 Duncannon Lane, Richmond, KY

Predator Control & Guard Animal Management for Livestock Owners Workshop & Lunch

Who: Madison & Garrard County Extension Offices, the Southeast Kentucky Sheep Producers Association (SEKSPA), Kentucky State University, and University of Kentucky Forestry Extension

What: Learn how to protect your livestock from predators

When: Saturday, April 13, 2024. Registration 8:30-9:00. Luncheon starts at 12 noon

Where: Madison Co Extension Office at 230 Duncannon Lane, Richmond, KY 40475

Featured Speakers: UK Wildlife Specialist Dr. Matt Springer, KSU Veterinarian Dr. Jessie Lay, SEKSPA President Dr. Patrick Angel and experts in guard animal management, predator hunting/snaring and coyote/bobcat trapping from United Trappers of Kentucky

Registration Required. Please register by calling the Madison County Extension Office at 859-623-4072

\$10.00 per family. Your registration fee will include a delicious lamb burger and beef burger luncheon with sides and a One-Year Membership to SEKSPA

This workshop qualifies for CAIP education credits

