

Pay Dirt

HORTICULTURE

February 2024

Hello Horticulturalists!

We have been blessed with beautiful weather this past week. It has definitely given me a case of spring fever! There are a lot of horticulture classes planned for this spring here at the Extension Office. I hope to see you there!

Amanda Sears



County Extension Agent for Horticulture
amanda.sears@uky.edu

Visit <https://madison.ca.uky.edu/> and click on "Program Areas" and then "Horticulture"

Horticulture Survey I would love to have your thoughts and feedback!

Please fill out the survey at the link below about the horticulture program here at the Madison County Extension Office. It is only 10 questions and shouldn't take long to complete.

https://uky.az1.qualtrics.com/jfe/form/SV_8kQvyex6i8kmBnw

If you would prefer a paper survey, call us at 859-623-4072 and we will send you one.



Cooperative Extension Service

Madison County
230 Duncannon Lane
Richmond, KY 40475
(859) 623-4072
Fax: (859) 624-9510
<http://extension.ca.uky.edu>

Why Do You Cry When You Cut Onions?

Onions make you cry because as onions are cut they release a vapor called propanethial-s-oxide.

When the vapor comes in contact with the eye, it is converted to a form of sulfuric acid, which produces the stinging sensation and subsequent tears.

To reduce tearing up when cutting an onion, the National Onion Association recommends you "... first chill the onions for 30 minutes. Then, cut off the top and peel the outer layers leaving the root end intact." It's the root end that has the highest concentration of the sulphuric compounds that cause your eyes to tear.

If you still have problems with tearing up, consider purchasing pre-chopped onions. Or consider using a sweet onion, they may be less likely to make you cry.



Cooperative
Extension Service

Agriculture and Natural Resources
Family and Consumer Sciences
4-H Youth Development
Community and Economic Development

MARTIN-GATTON COLLEGE OF AGRICULTURE, FOOD AND ENVIRONMENT

Educational programs of Kentucky Cooperative Extension serve all people regardless of economic or social status and will not discriminate on the basis of race, color, ethnic origin, national origin, creed, religion, political belief, sex, sexual orientation, gender identity, gender expression, pregnancy, marital status, genetic information, age, veteran status, physical or mental disability or reprisal or retaliation for prior civil rights activity. Reasonable accommodation of disability may be available with prior notice. Program information may be made available in languages other than English. University of Kentucky, Kentucky State University, U.S. Department of Agriculture, and Kentucky Counties, Cooperating. Lexington, KY 40506



Disabilities
accommodated
with prior notification.

Farmers' Market Update

Madison County Farmers' Market

To see updates on what the market is doing, check their Facebook page. <https://www.facebook.com/MadisonKYFarmersMarket>

Berea Farmers' Market

The Berea Farmer's Market is at its winter location at 207 N Broadway in Old Town Berea next to the skating rink. Winter hours are 10 am to 1 pm. Check their Facebook page for updates.

<https://www.facebook.com/bereafarmersmarket>



Commercial Growers

Produce Best Practices Training

Produce Best Practices Training will be offered twice this spring.

Tuesday March 26th at 12 noon or Wednesday April 24th at 3:00 pm

This training is a half hour long video shown over ZOOM. Once you have watched the video then you have to pass a short quiz in order to receive your certificate (certificates are given from the Kentucky Department of Agriculture). You have to only take this training once. If you have taken it in the past you do not have to do it again.

If you have questions or would like to register for one of the sessions, email Amanda Sears at amanda.sears@uky.edu.

Scale Certification

Thursday April 11th at 4:00 to 6:30 pm

Representatives from the Kentucky Department of Agriculture (KDA) will be at the Madison County Cooperative Extension Office testing and certifying scales for anyone who sells at the Farmer's Markets. Come by the Madison County Cooperative Extension Office, 230 Duncannon Lane, Richmond.

Scales must be for legal trade and made for commercial use. A legal-for-trade scale will be marked with:

- A serial number
- A model number
- Class III designation on the identification plate or seal



For more information, check out the Kentucky Department of Agriculture Farmers Market Manual: http://www.kyagr.com/marketing/documents/FM_Manual_and_Resource_Guide.pdf. Or if you have questions about scales, Heath Higdon at 502-782-9233 or heath.higdon@ky.gov.

If you plan on bringing a scale to be certified, please call 859-623-4072, and let us know.

**ZOOM WEBINAR:
INJURY
PREVENTION
IN THE GARDEN**

**with Special Guest
Gabriela Murza**

Utah State Extension Assistant Professor
of Health and Wellness



LEARN ABOUT:

- Preventing common garden injuries
- Minimizing pain from repetitive movements
- Using proper posture
- Maximizing tool use
- Incorporating stretches

**MARCH 21st, 2024
11AM-12:30PM EST**

Injury Prevention in the Garden provides participants with information about common garden injuries and steps that can be taken to prevent them.

This Zoom webinar will be held on March 21 from 11 to 12:30 pm.

Register at <http://ukfcs.net/RegistrationGardening>

What's Growing On My Tree?

A conk, also called a bracket fungus, is the fruiting body of a fungal disease that attacks mature woody plants.



They are found growing out of the trunk or at the base of a tree and are an indication that the tree is decaying inside.

Infection by these wood decay fungi are almost always associated with stress to the tree and wounding. The decay process is typically slow. By the time the conks are visible, internal decay is extensive and trees are more likely to fall or break in windstorms.

Seed Swap

**Monday, March 4th at 12 noon to 1:30 pm
Madison County Extension Office**

Interested in learning more about saving seeds? This program will discuss the basics of the seed saving process and be followed by a seed swap.

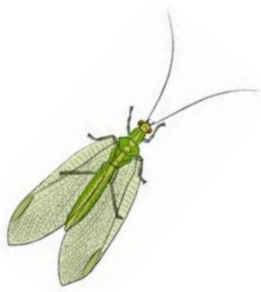


If you have seeds to share, bring them. But if you don't have any seeds, that's OK! There should be plenty to share.

Acceptable seeds to bring include those you have saved from open pollinated varieties of plants or any unused seed from packets. If you have questions, let me know (amanda.sears@uky.edu).

Call 859-623-4072 if you plan to attend so we will know how many handouts to prepare. Everyone is welcome!

Garden Crop	Earliest Date to Plant
Asparagus (crowns)	March 15
Broccoli (plants)	April 5
Cabbage	March 25
Cauliflower (plants)	April 5
Kale	March 20
Lettuce (leaf)	March 25
Onions (sets)	March 10
Peas	March 1
Irish Potatoes	March 15
Spinach	March 1



The More You Know; the Better You Grow!

All Classes are held at the Madison County Extension Office,
230 Duncannon Lane, Richmond.

Seating is limited so call 859-623-4072 to register soon!

Low Maintenance Lawn Care

Powell County Agriculture Agent Jason Vaughn will discuss how to choose the best type of grass for your area, proper mowing and how to avoid stressing your lawn using minimal resources.

Each attendee will receive a rain gauge.

Thursday March 21st at 6:30 to 8:00 pm.

Raise the Roof! Gardening with Raised Beds

Having problems gardening? Soil full of clay? Consider raised bed gardening! Raised beds have tons of benefits including less weeds, better drainage and the soil warms up earlier in the spring, which means you can plant some types of seeds sooner than with an inground garden.

This class will focus on the materials needed to build a raised bed and tips on how to grow a great garden using one!

A raised bed garden kit will be given to a lucky person during class!

Wednesday April 3rd at 10 to 11:30 am.

Landscape Basics

What should I plant there? Is mulch the same as compost? What's the deal with native plants? If you have ever asked yourself these kinds of questions, then this class will help! It will cover the basics of landscaping such plant selection, basic maintenance and other ways to simplify your landscaping and make it great!

Participants will receive a trowel (hand shovel) to use at home!

Tuesday April 16th at 6:30 to 8:00 pm

Name that Pest!

This class will look at common insects and disease problems and how to prevent them. The focus will be on pests in the vegetable garden, landscape and lawn.

All attendees will receive a magnifying glass and taught how to use it when identifying problems.

Monday May 6th at 10 to 11:30 am

